

Constitution of the Local Government Association

1.0 Constitution and Title

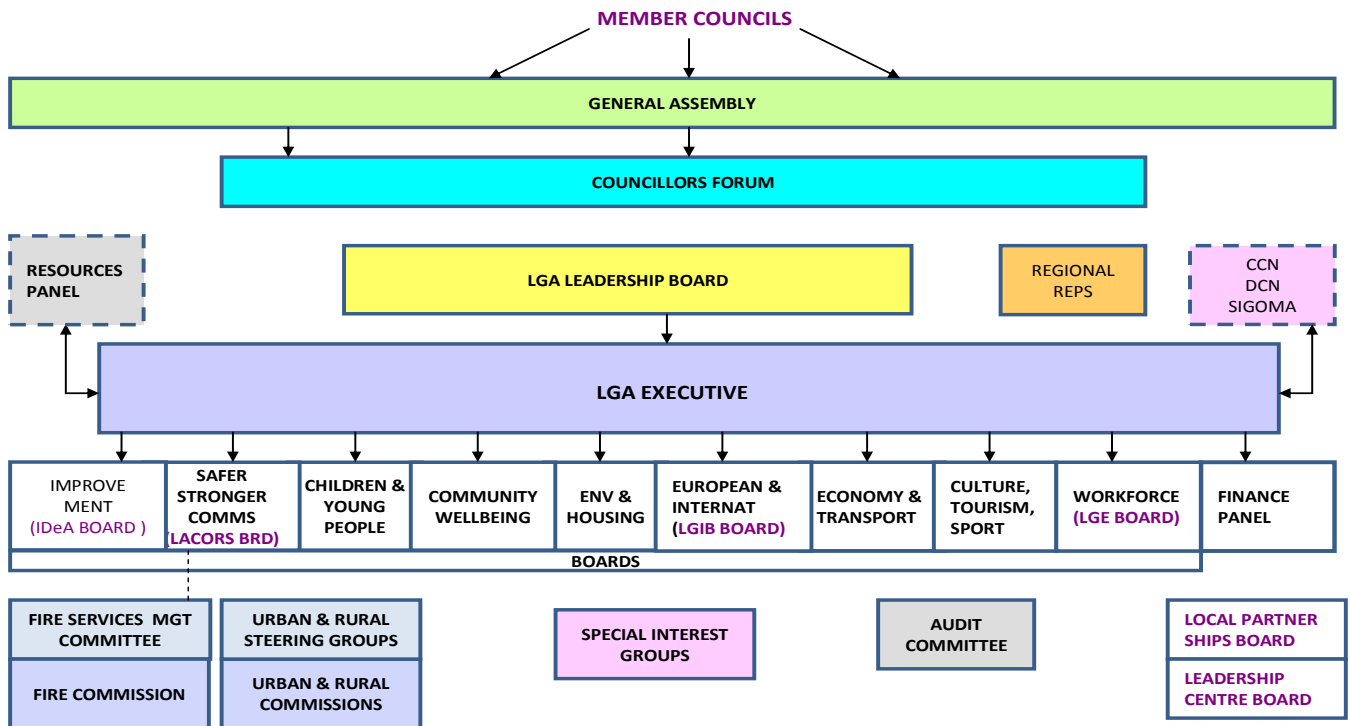
- 1.1 The name of the Association shall be the Local Government Association.
- 1.2 The Association shall consist of such principal councils in England and Wales, the Common Council of the City of London, and such statutory combined fire and rescue authorities and police authorities established by statute, national parks authorities and eligible town and parish councils as have desired to be and remain in membership.
- 1.3 The following bodies shall be eligible for full membership of the Association (referred to as “full member authorities”):-
 - 1.3.1 Principal councils in England and Wales
- 1.4 The following bodies in Wales shall be eligible for corporate membership of the Association through the Welsh Local Government Association
 - 1.4.1 Principal councils
 - 1.4.2 Combined fire & rescue authorities
 - 1.4.3 Police & Crime Commissioners
 - 1.4.4 Welsh national parks authorities
- 1.5 English National Park Authorities shall be eligible for corporate membership of Association through the English National Park Authorities Association.
- 1.6 Police & Crime Commissioners shall be eligible for corporate membership of the Association through their national representative body (Name TBC)
- 1.7 The following bodies shall be eligible for associate membership of the Association
Voting
 - 1.7.1 Combined fire & rescue authorities
 - 1.7.2 Police & Crime Commissioners
 - 1.7.3 National parks authorities
 - 1.7.4 Integrated transport authorities

Non voting

- 1.7.5 Town & parish councils that meet specified criteria

- 1.8 The Association may invite into membership other local, regional and national government bodies, including the Greater London Authority, on such terms as shall be determined by the LGA Executive.

LGA GOVERNANCE STRUCTURES



LGA Executive

Provides strategic direction to the work of the Association and the central bodies, having regard to any advice from the LGA Leadership Board and the boards of the central bodies and representing the views of local government.

LGA Leadership Board

Directs the Association's activities and business, in accordance with the strategic priorities and direction set by the LGA Executive; reports and makes recommendations to the LGA Executive on the Association's activities

Company Boards of the IDeA, LGE, LACORS & Local Partnerships;

Board of Trustees of Leadership Centre

Direct the activities and business of the respective bodies, and ensure their proper management in accordance with their Memoranda and Articles of Association, and with the strategic priorities and direction set by the LGA Executive; contribute to the development of the LGA business plan; oversee delivery of projects commissioned outside the LGA and report to the LGA Executive on their activities.

Councillors appointed to the Boards of the IDeA, Employers Organisation (LGE) and LACORS are members of the Improvement Board, Workforce Board and Safer & Stronger Communities Boards respectively.

Boards

Engage with and develop a thorough understanding of councils' priorities in relation to their particular area; help shape the LGA business plan and oversee of work to deliver, through extensive engagement with councils, the strategic priorities set by the LGA Executive. The programme boards are:-

- ◆ Children & Young People Board
- ◆ Environment & Housing Board
- ◆ Economy & Transport Board
- ◆ Safer & Stronger Communities Board
- ◆ Community Wellbeing Board
- ◆ Culture, Tourism & Sport Board
- ◆ Workforce Board/Employers Organisation for Local Government (LGE)
- ◆ European & International Board/LGIB Board
- ◆ Improvement Board/ IDeA Board

Each has its own terms of reference.

Finance Panel

Shapes and develops the Association's policies and work programmes on local government finance and reports to the LGA Executive.

Resources Panel

Oversees, scrutinises and reports to the LGA Executive and the relevant organisational boards on the effective internal operation of the LGA.

Audit Committee

Monitors the integrity of the financial statements of the LGA and its associated organisations and oversee their internal control and risk management systems.

Commissions

Provide a forum for member authorities to come together to discuss matters of common interest and concern, to exchange good practice and to influence the priorities and activities of the LGA. Each Commission is led by a steering committee and reports annually to the LGA Executive. There are three Commissions

- ◆ Urban
- ◆ Rural
- ◆ Fire

